



啟動財富人生的達人
Enrich Your Future

技術圖形20100126

- 型態
- 均線
- DIF與MACD



啟富達國際股份有限公司版權所有 未經同意 請勿重製



2010/1/27

啟富達國際股份有限公司

\$XEU (Euro Index) INDX

© StockCharts.com

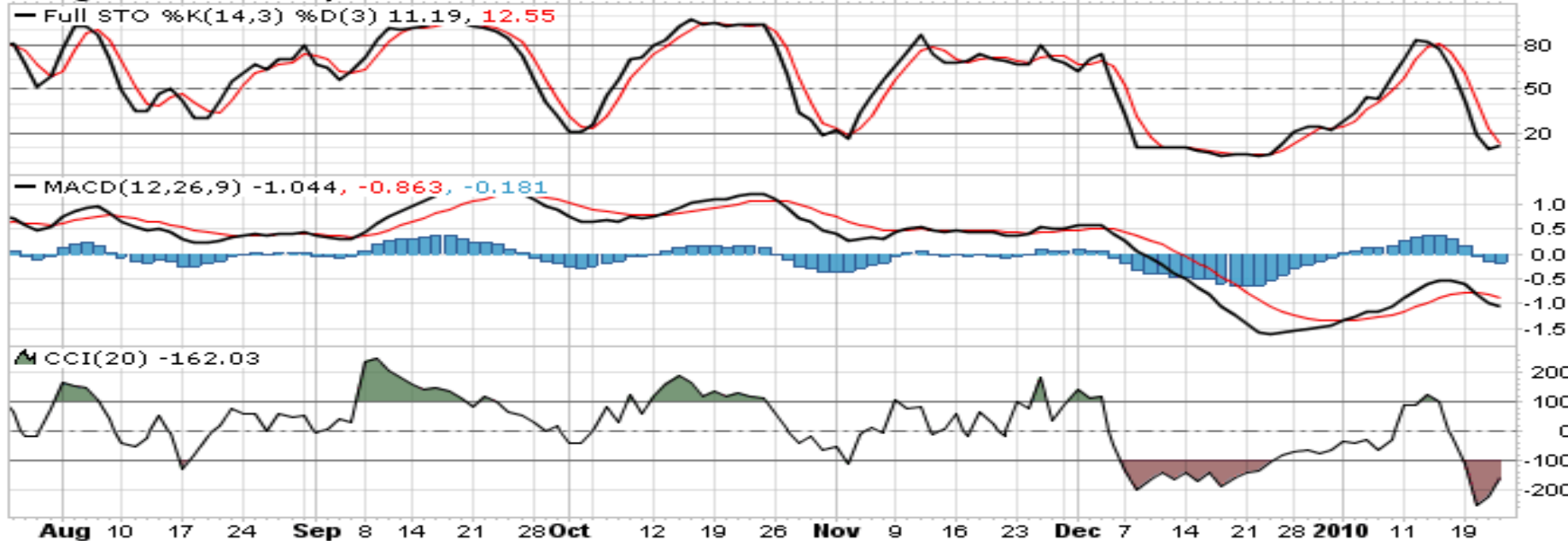
Friday 22-Jan-2010

Open: **141.24** Bid: **0.00** P/E:
 High: **141.81** Bid Size: **0** EPS:
 Low: **140.89** Ask: **0.00** Last:
 Prev Close: **140.91** Ask Size: **0** VWAP:

▲ +0.34%
 Chg: **+0.48**
 Last: **141.39**
 Volume: **0**

☞ \$XEU (Daily) 141.39

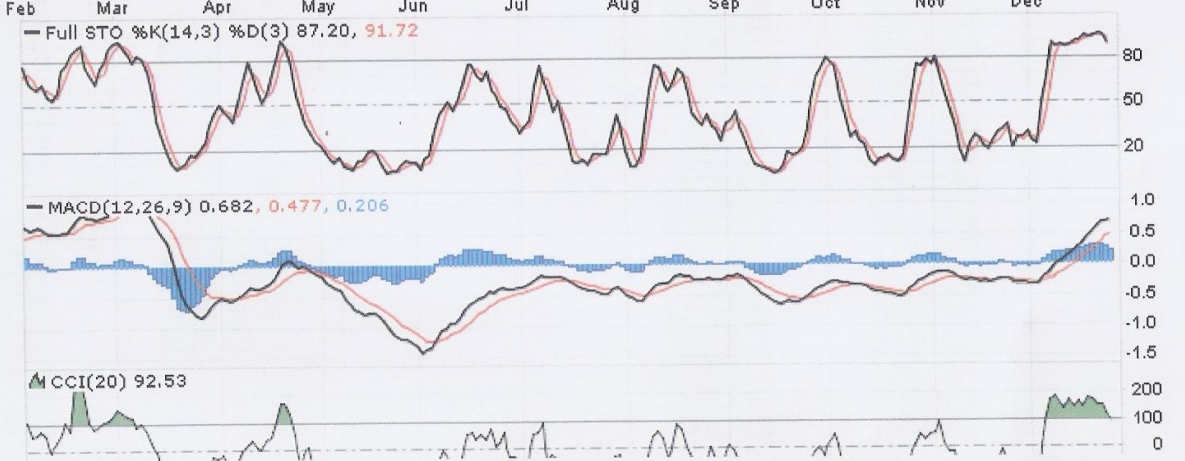
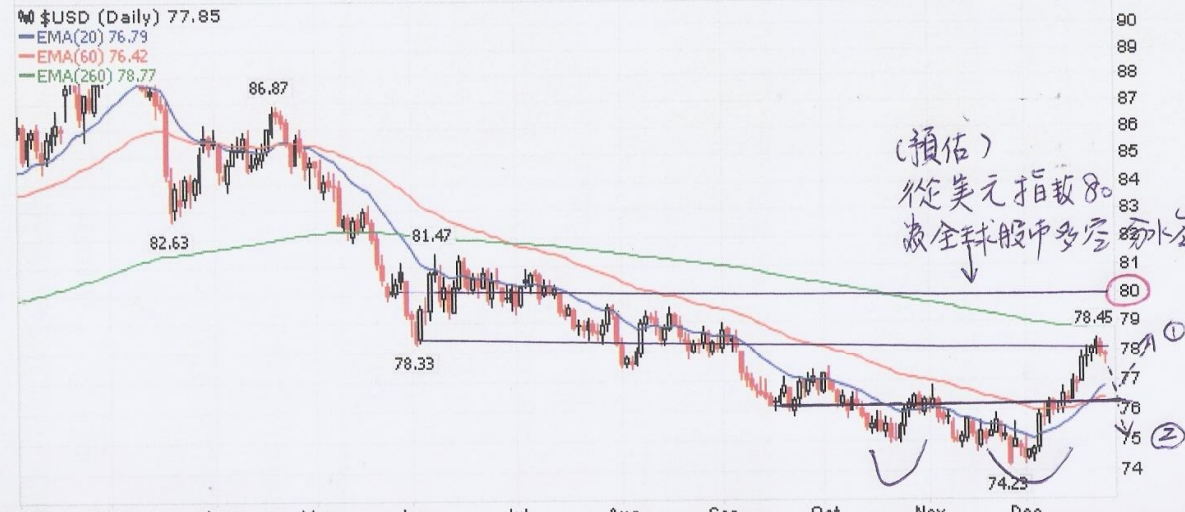
— EMA(20) 143.58
 — EMA(60) 145.27
 — EMA(260) 142.81



美元指數趨勢分析

\$USD (US Dollar Index (EOD)) INDX © StockCharts.com

Thursday 24-Dec-2009 4:00 pm
 Open: 77.89 Bid: P/E:
 High: 77.92 Bid Size: EPS:
 Low: 77.50 Ask: Last:
 Prev Close: 77.90 Ask Size: VWAP:
 Last Trade: ▼ -0.07%
 Chg: -0.05
 Last: 77.85
 Volume: 0



<1> 投資邏輯:

美元 - ① 非美貨幣, 股市
 ② CRB (原油/黃金)
 ③ 計價

<2> 技術分析:

① 美元指數在過去美國第三季 GDP 下調至 2.2%, 及新屋銷售/密西根信心指數公佈低於預期; 歐元區債信疑慮稍歇, 美元指數進行回跌。

② 型態上有二種觀察趨勢

A = 第一種 = (美元確立走強)

B = 第二種 = (美元繼續回跌)

<3> 欲投資, 請觀察。

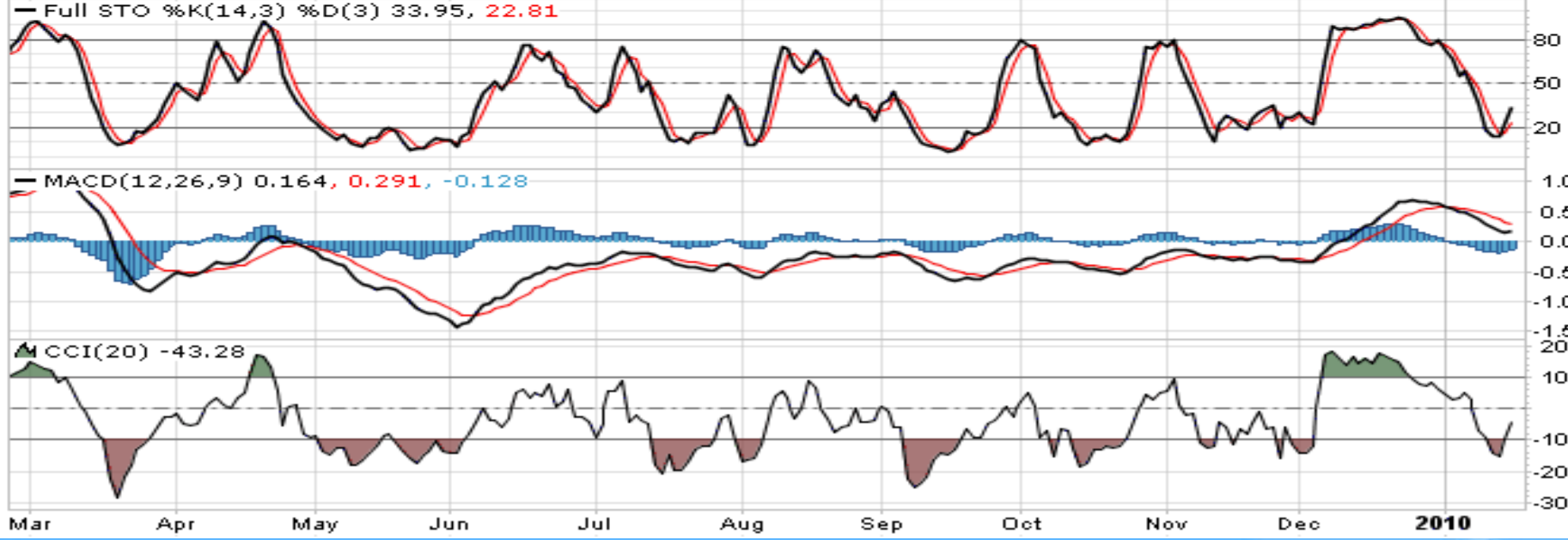
\$USD (US Dollar Index (EOD)) INDX

© StockCharts.com

Tuesday 19-Jan-2010 4:00 pm

Open: **76.98** Bid: P/E:
 High: **77.69** Bid Size: EPS:
 Low: **76.94** Ask: Last:
 Prev Close: **77.24** Ask Size: VWAP:

Last Trade:
▲ +0.28%
 Chg: **+0.21**
 Last: **77.45**
 Volume: **0**



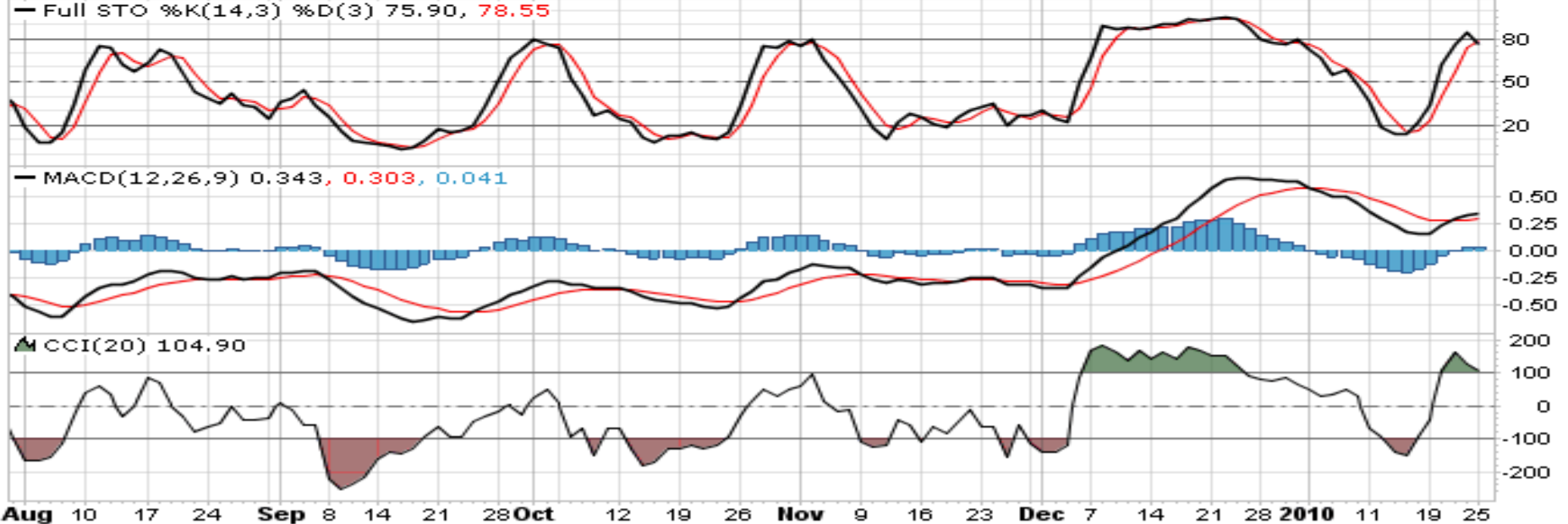
\$USD (US Dollar Index (EOD)) INDX

© StockCharts.com

Monday 25-Jan-2010 4:00 pm

Open: **78.23** Bid: P/E:
 High: **78.34** Bid Size: EPS:
 Low: **78.03** Ask: Last:
 Prev Close: **78.28** Ask Size: VWAP:

Last Trade:
▼ -0.13%
 Chg: **-0.10**
 Last: **78.18**
 Volume: **0**



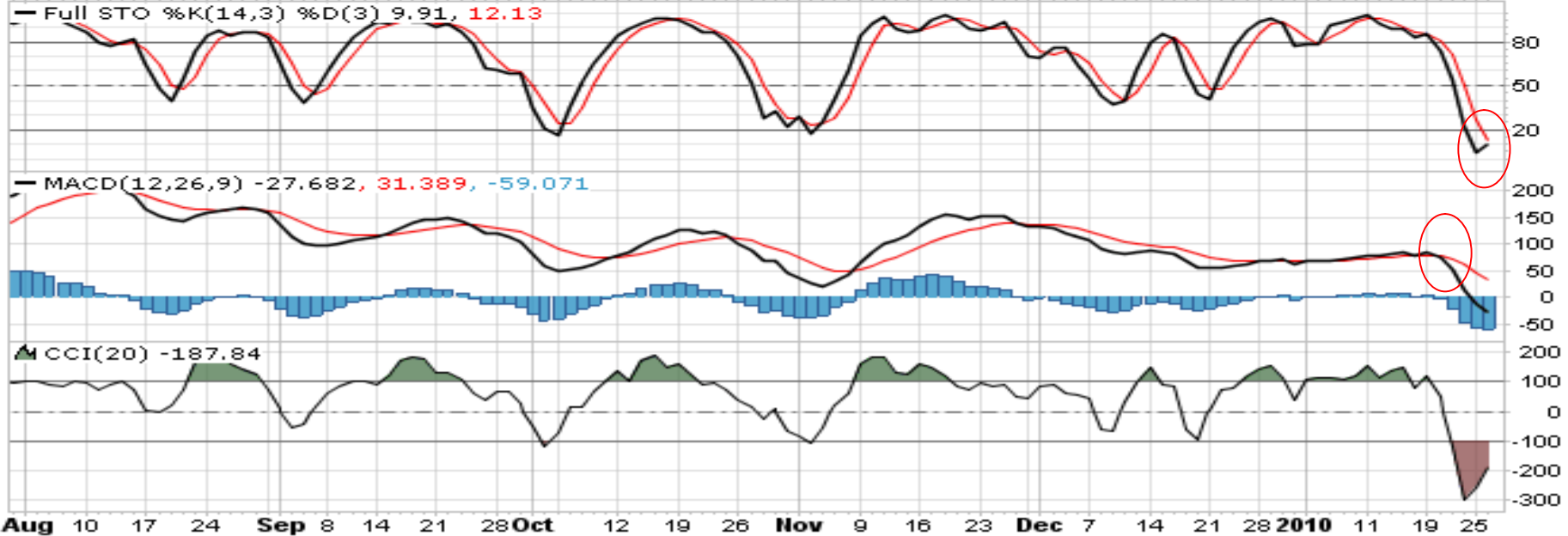
\$INDU (Dow Jones Industrial Average) INDX

© StockCharts.com

Tuesday 26-Jan-2010 1:42 pm

Open:	10195.35	Bid:		P/E:	
High:	10285.13	Bid Size:		EPS:	
Low:	10155.60	Ask:		Last:	
Prev Close:	10196.86	Ask Size:		VWAP:	

Last Trade:
▲ **+0.73%**
 Chg: **+74.75**
 Last: **10271.61**
 Volume: **0**

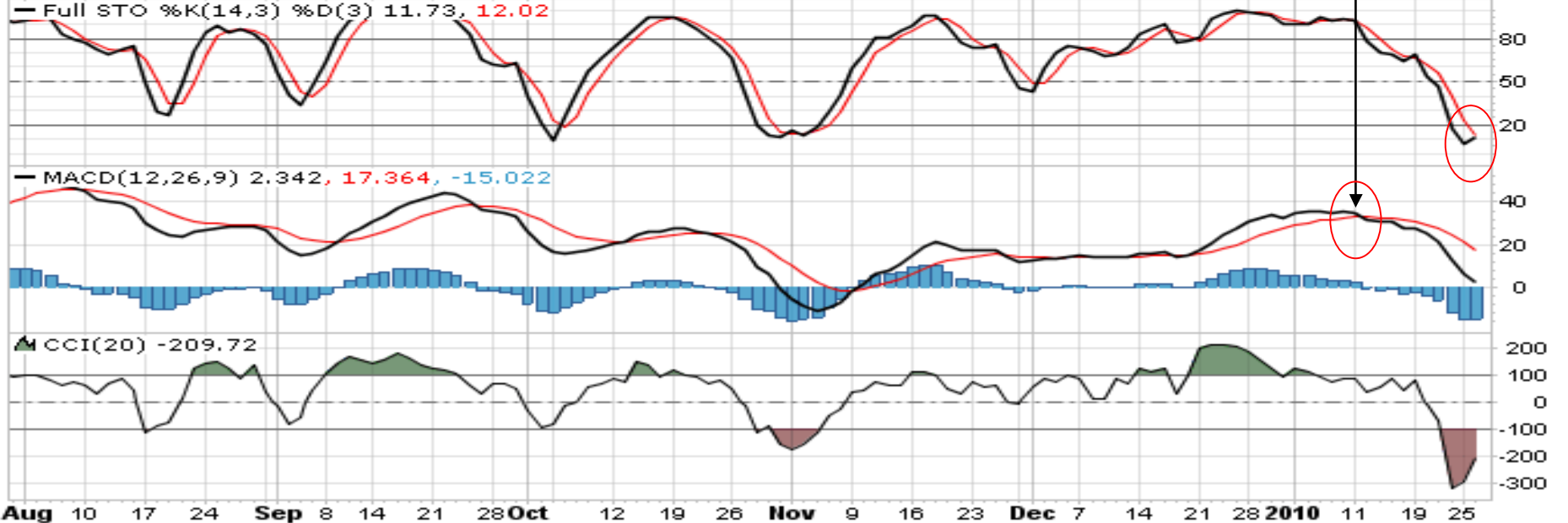


\$COMPQ (Nasdaq Composite) INDX

© StockCharts.com

Tuesday 26-Jan-2010 1:47 pm
 Open: **2203.44** Bid: **0.00** P/E:
 High: **2227.23** Bid Size: **0** EPS:
 Low: **2195.44** Ask: **0.00** Last:
 Prev Close: **2210.80** Ask Size: **0** VWAP:

Last Trade: **▲ +0.67%**
 Chg: **+14.74**
 Last: **2225.54**
 Volume: **1,432,790,016**



台股指數趨勢分析



<-> 基本面:

近期台股受惠 (PPI 伴) NASDAQ 指數, 因美國 CES (1%) 消費電子展預期, 突破技術型態的上升三角形。

<=> 技術面:

① 型態 = 上升三角形突破

② 轉折 = 週三 (1/6) 面臨 (3 天)。

\$TWII (Taiwan Weighted Index (EOD)) INDX

© StockCharts.com

Monday 25-Jan-2010 4:00 pm

Open: **7872.99** Bid: P/E:
 High: **7872.99** Bid Size: EPS:
 Low: **7872.99** Ask: Last:
 Prev Close: **7872.99** Ask Size: VWAP:

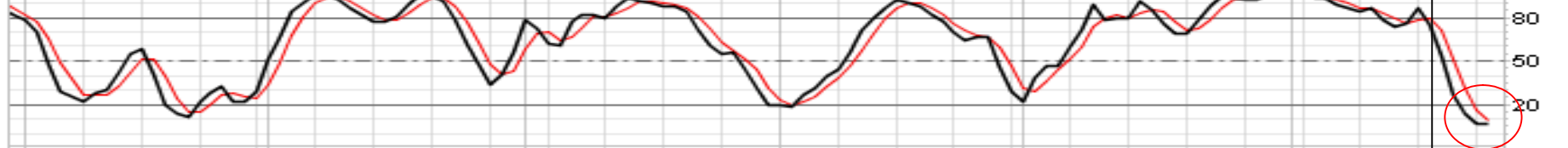
Last Trade: **+0.00%**
 Chg: **+0.00**
 Last: **7872.99**
 Volume: **0**

% \$TWII (Daily) 7872.99

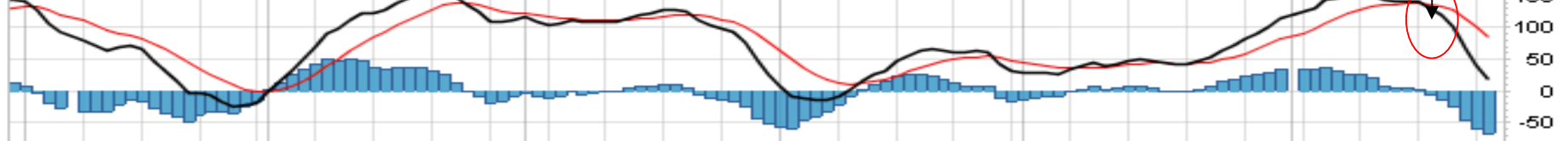
— EMA(20) 8096.24
 — EMA(60) 7899.12
 — EMA(260) 7093.84



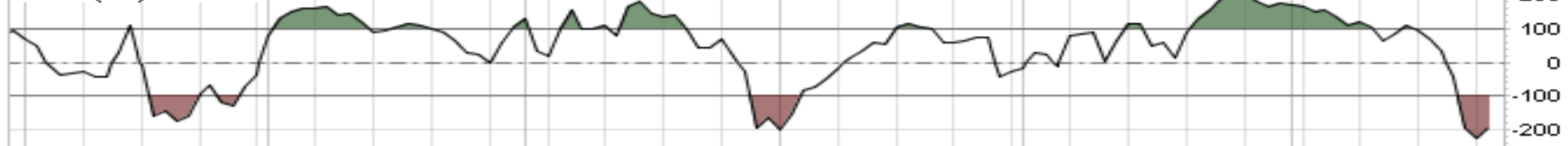
— Full STO %K(14,3) %D(3) 6.25, 8.61



— MACD(12,26,9) 16.994, 83.819, -66.826



▲ CCI(20) -195.94



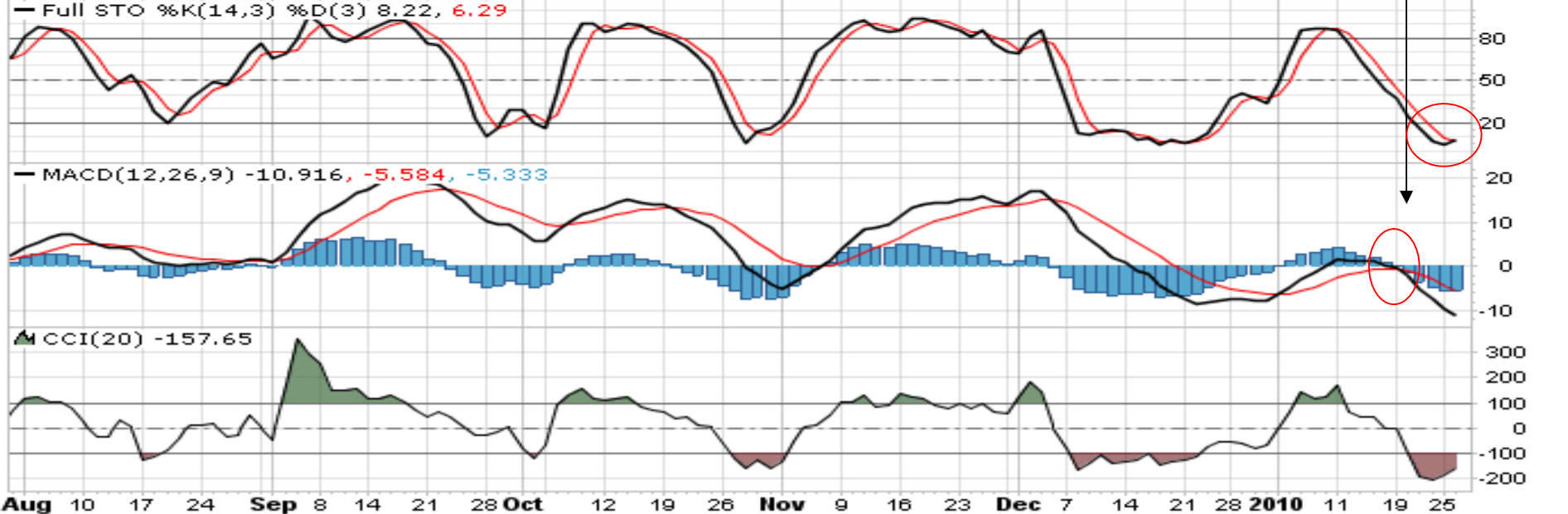
Aug 10 17 24 Sep 7 14 21 28 Oct 12 19 26 Nov 9 16 23 Dec 7 14 21 28 2010 11 18 25

\$HUI (Gold Bugs Index - AMEX) INDX

© StockCharts.com

Tuesday 26-Jan-2010 1:59 pm
 Open: **398.04** Bid: **402.48** P/E:
 High: **404.70** Bid Size: **0** EPS:
 Low: **391.04** Ask: **402.72** Last:
 Prev Close: **398.04** Ask Size: **0** VWAP:

Last Trade:
▲ +1.15%
 Chg: **+4.57**
 Last: **402.61**
 Volume: **0**



\$BVSP (Brazilian Bovespa Stock Index (EOD)) INDX

© StockCharts.com

Friday 22-Jan-2010 4:00 pm

Open: **66220.04** Bid: P/E:
 High: **66220.04** Bid Size: EPS:
 Low: **66220.04** Ask: Last:
 Prev Close: **66220.04** Ask Size: VWAP:

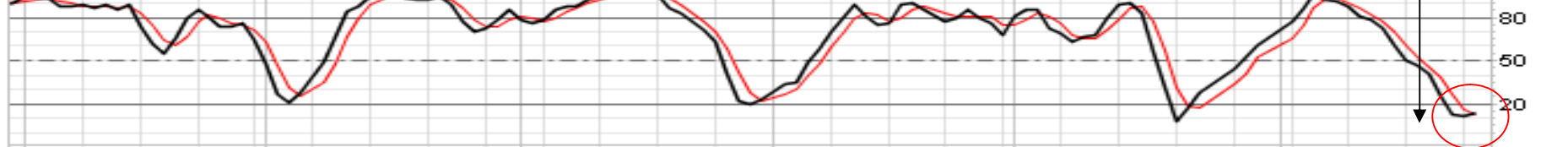
Last Trade: **+0.00%**
 Chg: **+0.00**
 Last: **66220.04**
 Volume: **0**

\$BVSP (Daily) 66220.04

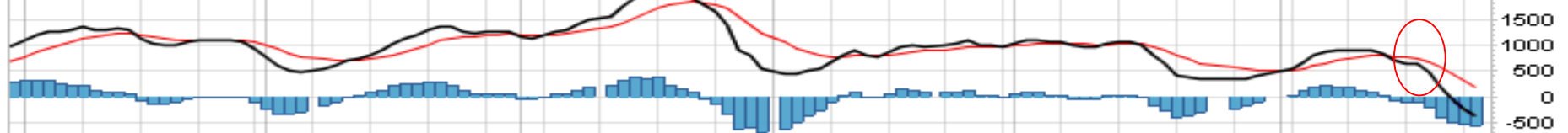
EMA(20) 68205.99
 EMA(60) 66945.99
 EMA(260) 58161.39



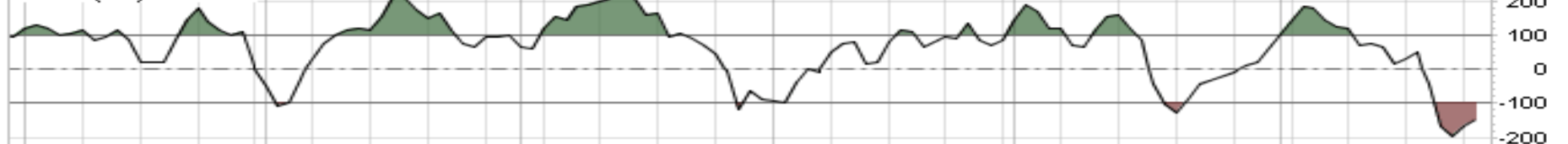
Full STO %K(14,3) %D(3) 13.78, 12.45



MACD(12,26,9) -362.820, 181.485, -544.305



CCI(20) -149.04



Aug 10 17 24 Sep 7 14 21 28 Oct 12 19 26 Nov 9 16 23 Dec 7 14 21 28 2010 11 18 25

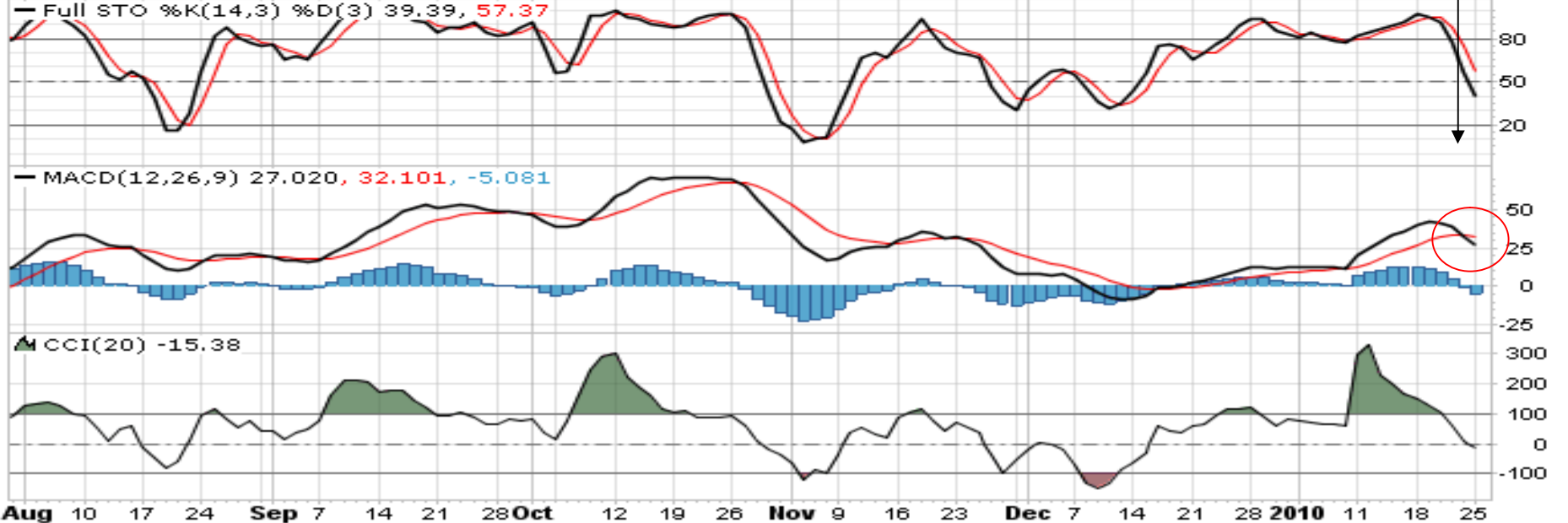
\$RTSI (Russian Trading System (RTS) Index (EOD)) INDX

© StockCharts.com

Monday 25-Jan-2010 4:00 pm

Open: **1492.93** Bid: P/E:
 High: **1501.32** Bid Size: EPS:
 Low: **1471.56** Ask: Last:
 Prev Close: **1489.46** Ask Size: VWAP:

Last Trade:
▼ -0.24%
 Chg: **-3.54**
 Last: **1485.92**
 Volume: **0**



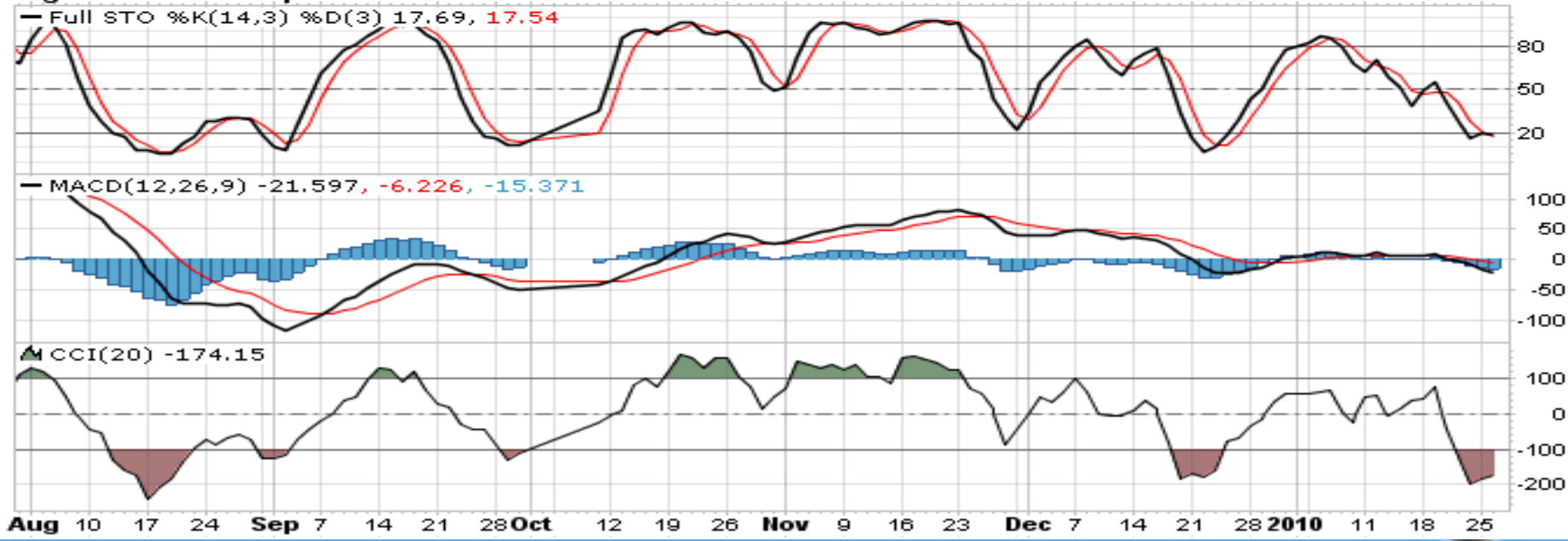
\$SSEC (Shanghai Stock Exchange Composite Index (EOD)) INDX

© StockCharts.com

Monday 25-Jan-2010 4:00 pm

Open: **3094.41** Bid: P/E:
 High: **3094.41** Bid Size: EPS:
 Low: **3094.41** Ask: Last:
 Prev Close: **3094.41** Ask Size: VWAP:

Last Trade:
+0.00%
 Chg: **+0.00**
 Last: **3094.41**
 Volume: **0**



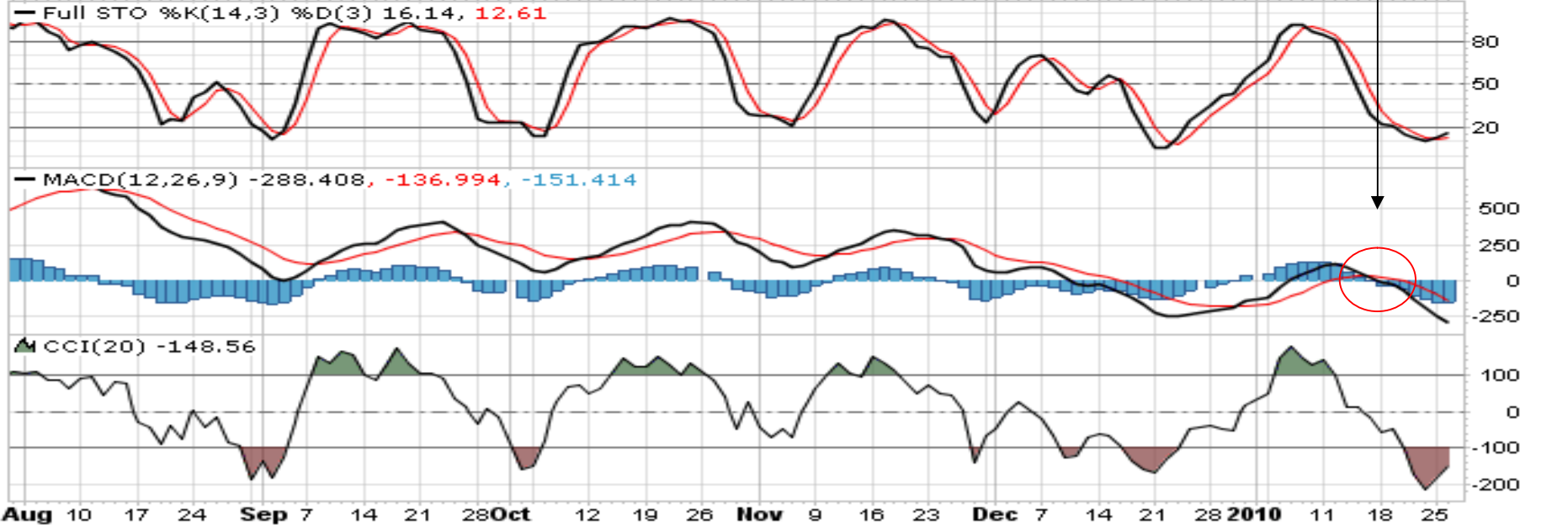
\$HSI (Hong Kong Hang Seng (EOD)) INDX

© StockCharts.com

Monday 25-Jan-2010 4:00 pm

Open: **20598.551** Bid: P/E:
 High: **20598.551** Bid Size: EPS:
 Low: **20598.551** Ask: Last:
 Prev Close: **20598.551** Ask Size: VWAP:

Last Trade: **+0.00%**
 Chg: **+0.000**
 Last: **20598.551**
 Volume: **0**



\$BSE (India Bombay Stock Exchange 30 Sensex Index (EOD)) INDX

© StockCharts.com

Monday 25-Jan-2010 4:00 pm

Open: **16780.461** Bid: P/E:
 High: **16780.461** Bid Size: EPS:
 Low: **16780.461** Ask: Last:
 Prev Close: **16780.461** Ask Size: VWAP:

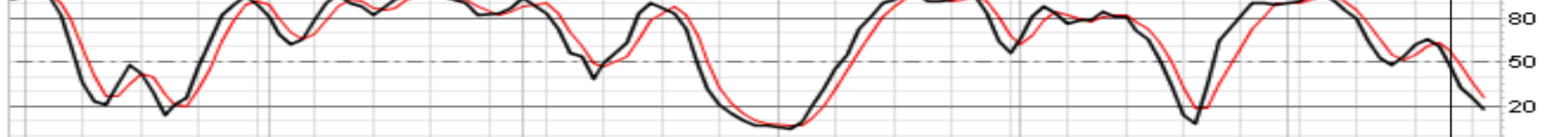
Last Trade: **+0.00%**
 Chg: **+0.000**
 Last: **16780.461**
 Volume: **0**

Ⓜ \$BSE (Daily) 16780.46

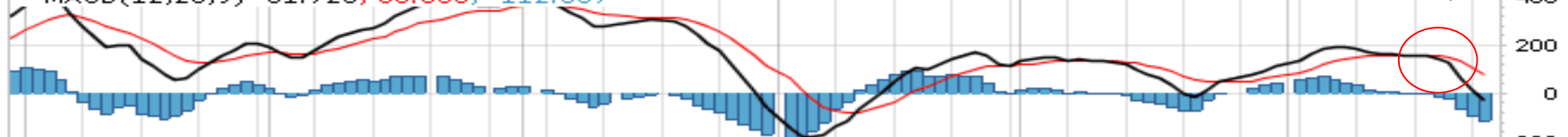
— EMA(20) 17274.83
 — EMA(60) 17036.00
 — EMA(260) 15132.51



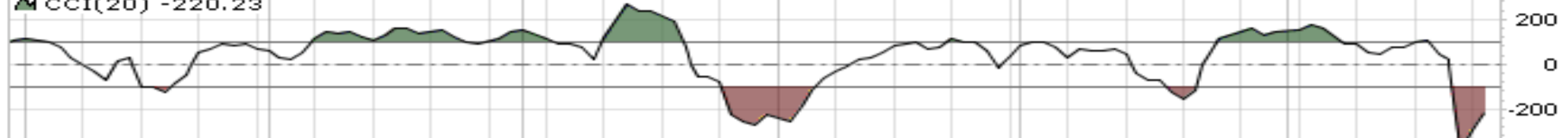
— Full STO %K(14,3) %D(3) 16.87, 24.82



— MACD(12,26,9) -31.725, 80.833, -112.557



▲ CCI(20) -220.23



Aug 10 17 24 Sep 7 14 21 28 Oct 12 19 26 Nov 9 16 23 Dec 7 14 21 28 2010 11 18 25