

WMA 財富管理顧問課程

WMA (Wealth Management Advisor)

【運用邏輯架構與資訊分析，提供解決方案】

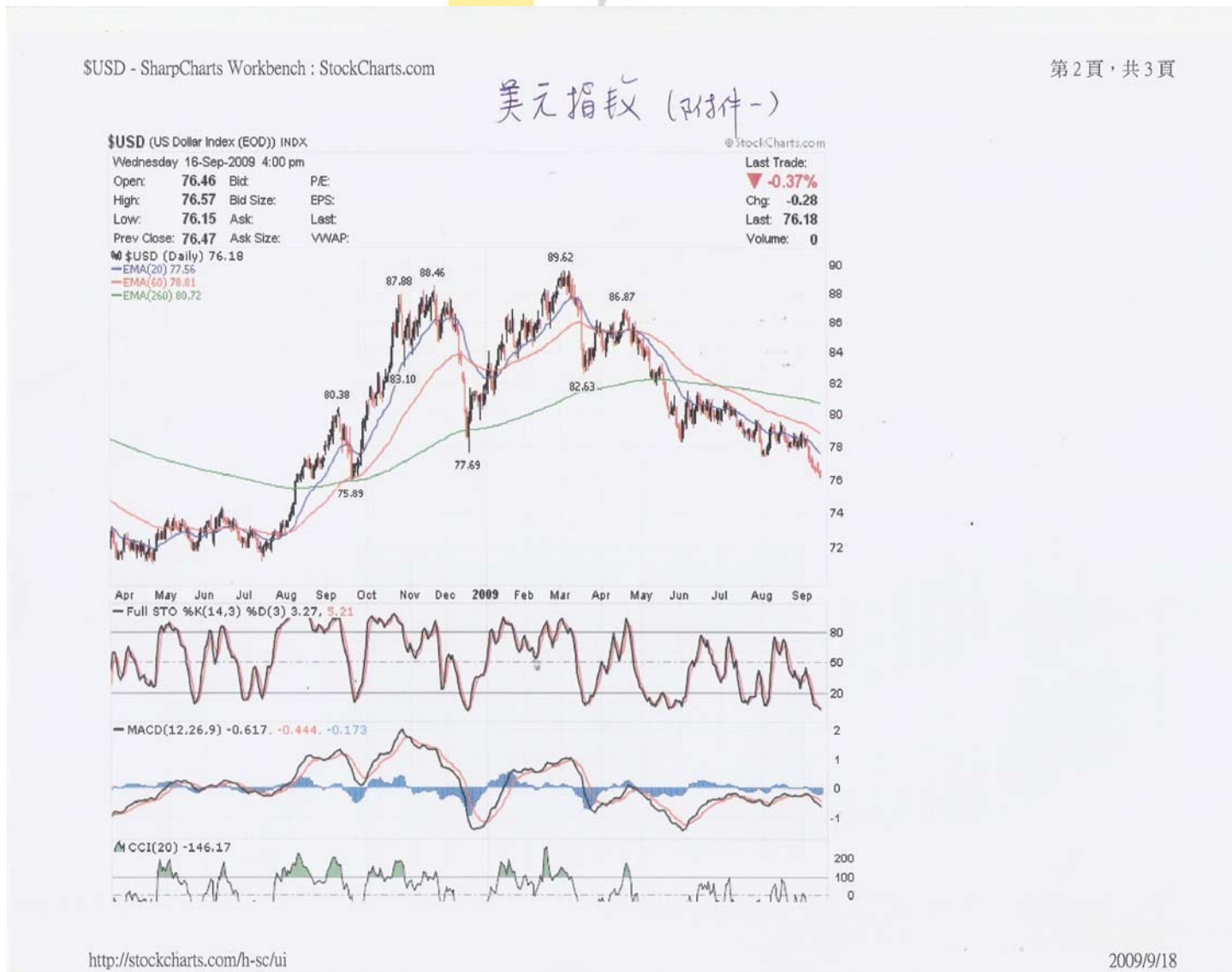
啓富達國際 首席顧問 李建平

<http://www.cfd.tw>

匯市與股市的關係

資料來源：【啓富達國際研究團隊】2009 / 09 / 18

1. 美元指數 20090916

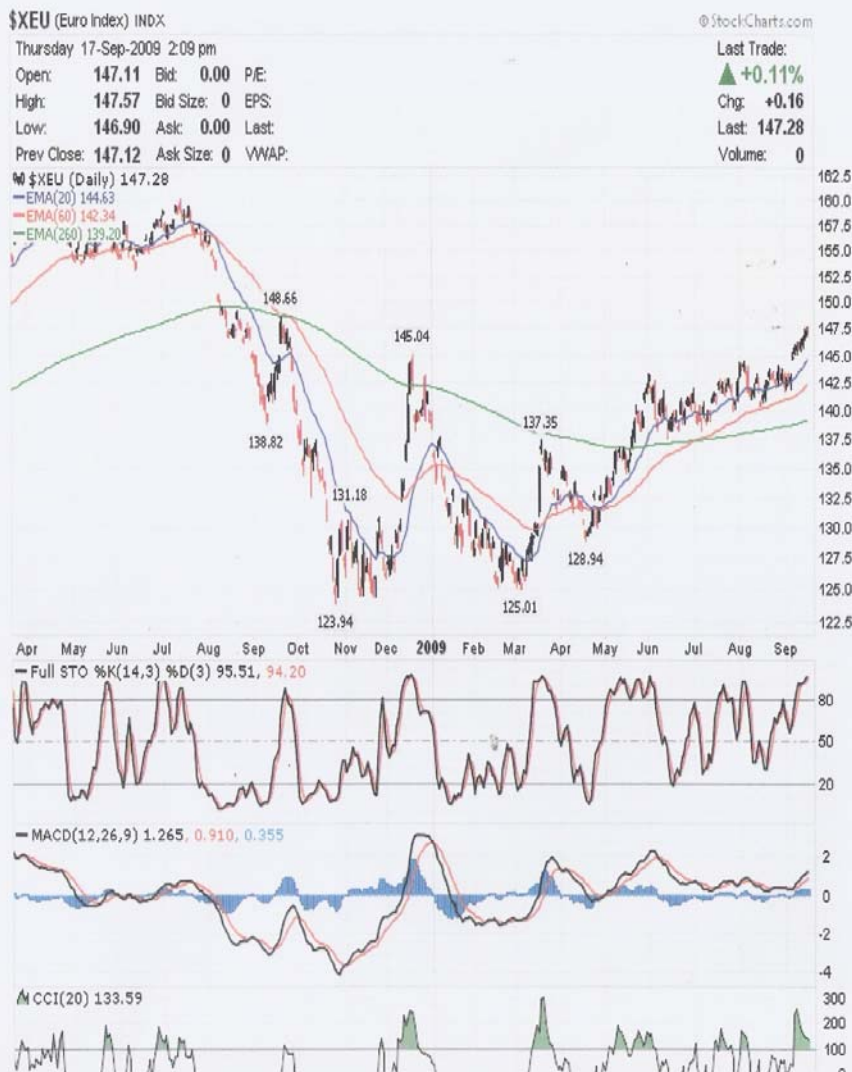


2. 歐元指數 20090916

\$XEU - SharpCharts Workbench : StockCharts.com

歐元指數 (附件二)

第2頁, 共3頁



<http://stockcharts.com/h-sc/ui>

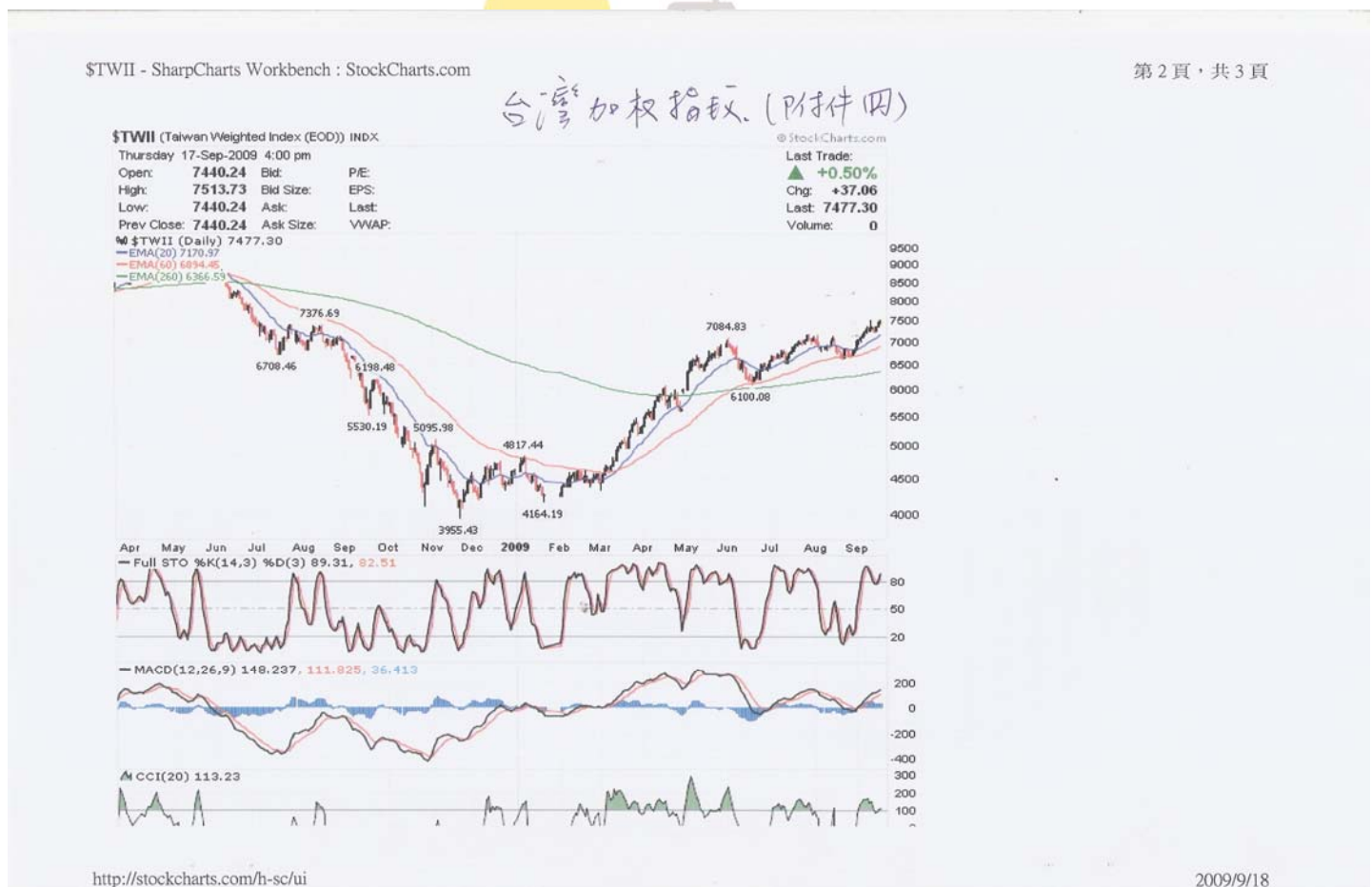
2009/9/18



3. 印度 20090916



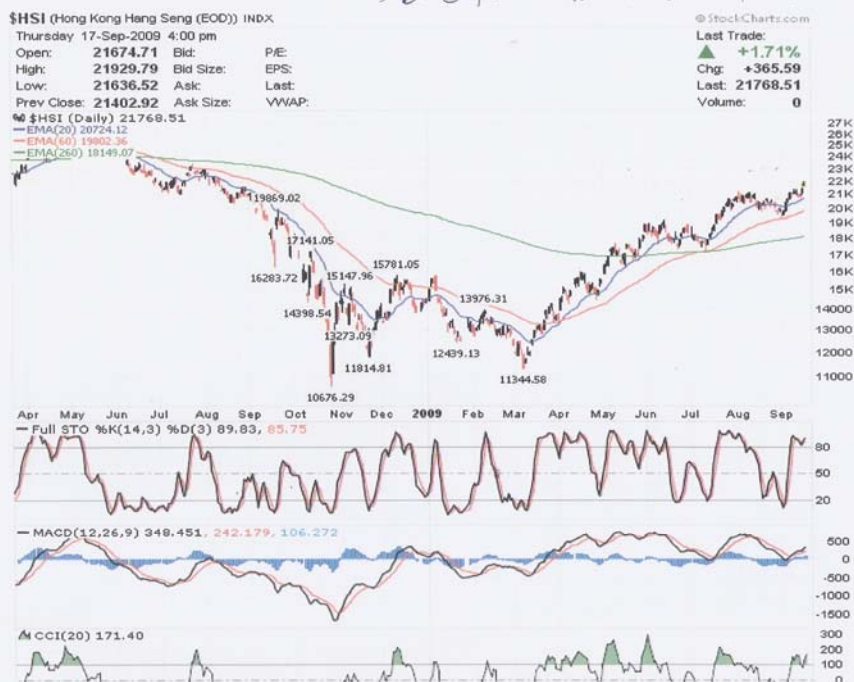
4. 印度 20090916



5. 香港 20090916

\$HSI - SharpCharts Workbench : StockCharts.com

香港恒生指數 (附件五)



<http://stockcharts.com/h-sc/ui>

2009/9/18

6. 巴西 20090916

\$BVSP - SharpCharts Workbench : StockCharts.com

巴西聖保羅(拉美) (附件六)



<http://stockcharts.com/h-sc/ui>

2009/9/18

\$RTSI - SharpCharts Workbench : StockCharts.com

俄羅斯指數(東歐) - 以併七

\$RTSI (Russian Trading System (RTS) Index (EOD)) INDX

@ StockCharts.com

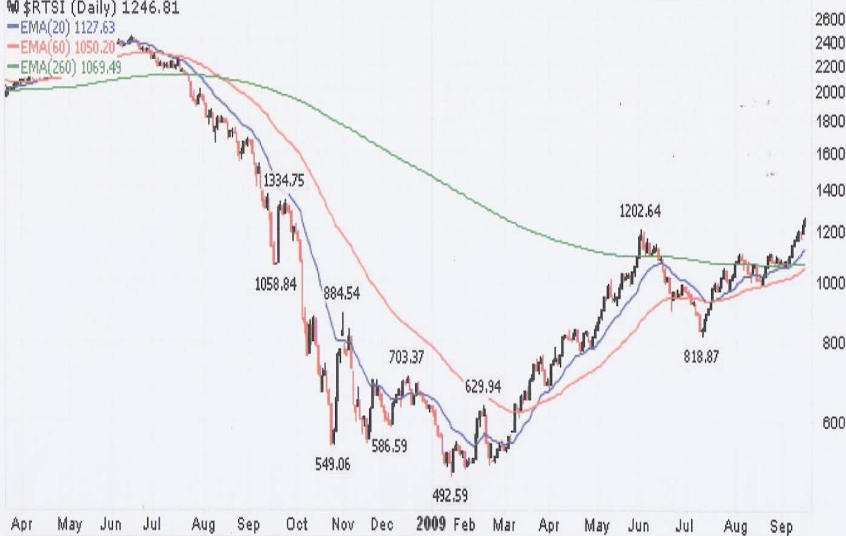
Wednesday 16-Sep-2009 4:00 pm

Open: 1224.33 Bid: P/E:
 High: 1257.73 Bid Size: EPS:
 Low: 1224.33 Ask: Last:
 Prev Close: 1224.33 Ask Size: VWAP:

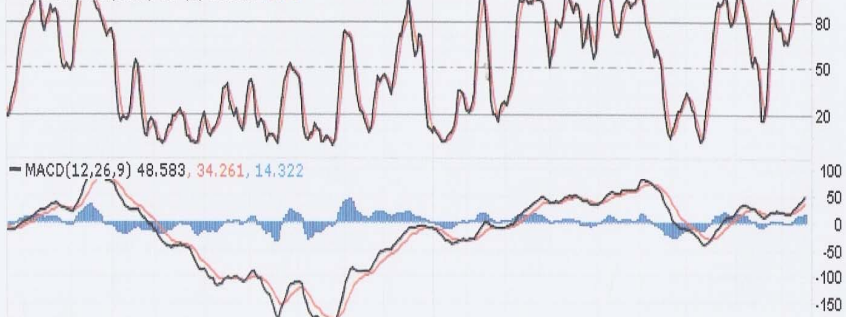
Last Trade:
 ▲ +1.84%
 Chg: +22.48
 Last: 1246.81
 Volume: 0

\$RTSI (Daily) 1246.81

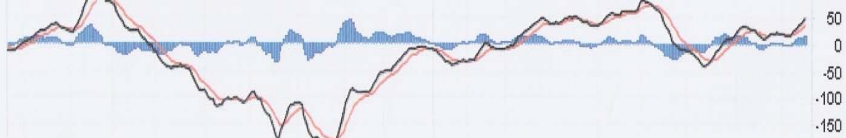
EMA(20) 1127.63
 EMA(60) 1050.20
 EMA(260) 1069.49



Full STO %K(14,3) %D(3) 96.66, 96.75



MACD(12,26,9) 48.583, 34.261, 14.322



CCI(20) 174.54



<http://stockcharts.com/h-sc/ui>

2009/9/18